



Lamtara

brochure of residences
in Madinat Jumeirah Living community



Lamtara is a premium residential project in Madinat Jumeirah Living next to the world-famous Burj Al Arab sail hotel.



+971 (4) 364-0560

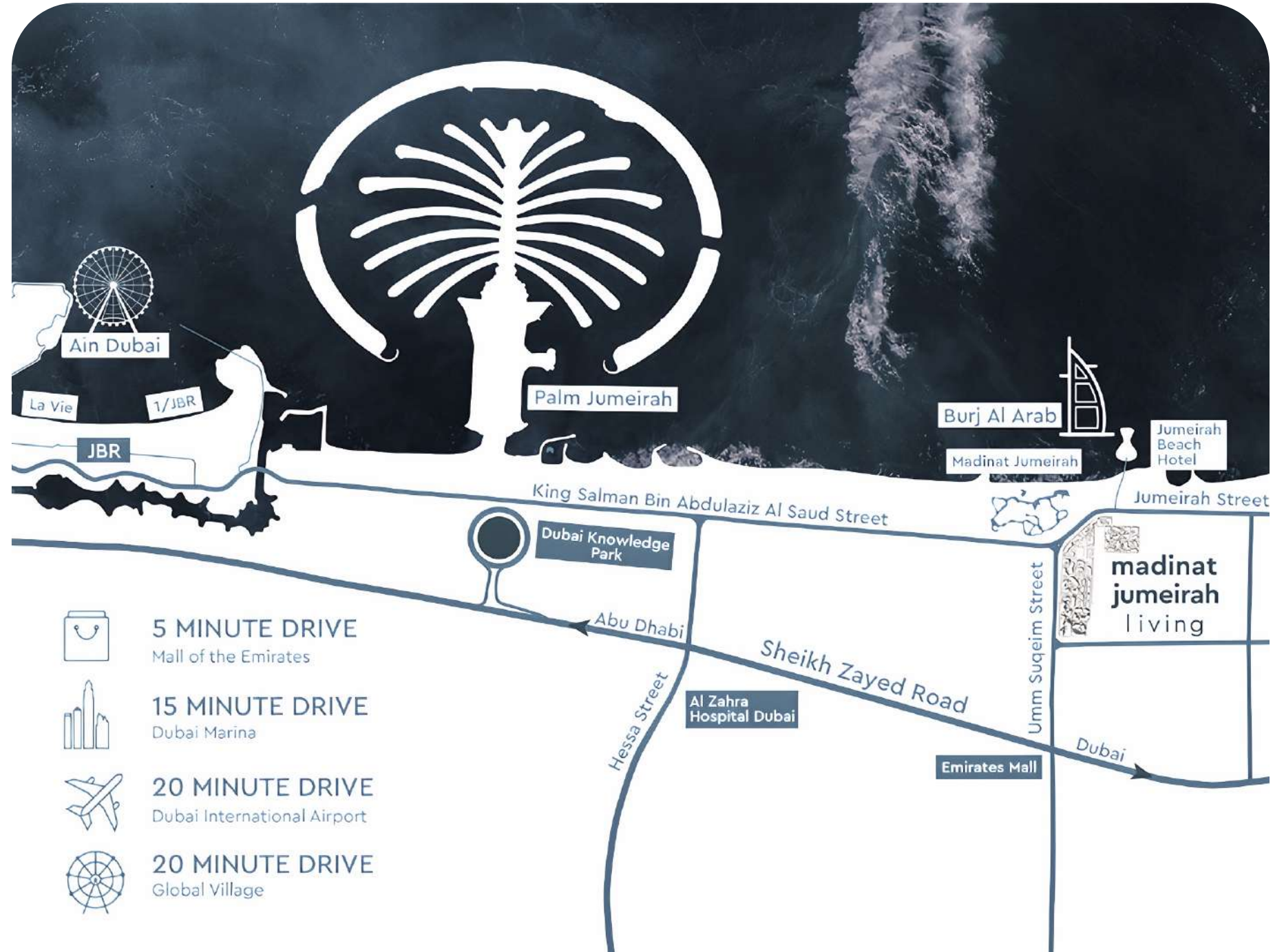
Close to main attractions

Madinat Jumeirah Living is a new premium residential complex located in Umm Suqeim, within walking distance of Sheikh Zayed Road. The main advantage of MJL is its convenient location in close proximity to the largest points of Dubai.

- AL JAZI
- JADEEL
- ASAYEL
- RAHAAL
- LAMTARA

Easy access to the city center and to the sea

Lamtara is a 5-minute drive from Burj Al Arab, Wild Wadi Waterpark™ and Jumeirah Beach Hotel, major shopping malls, public transportation and schools. Easy access to Jumeirah Beach Road as well as major highways.



Madinat Jumeirah Living



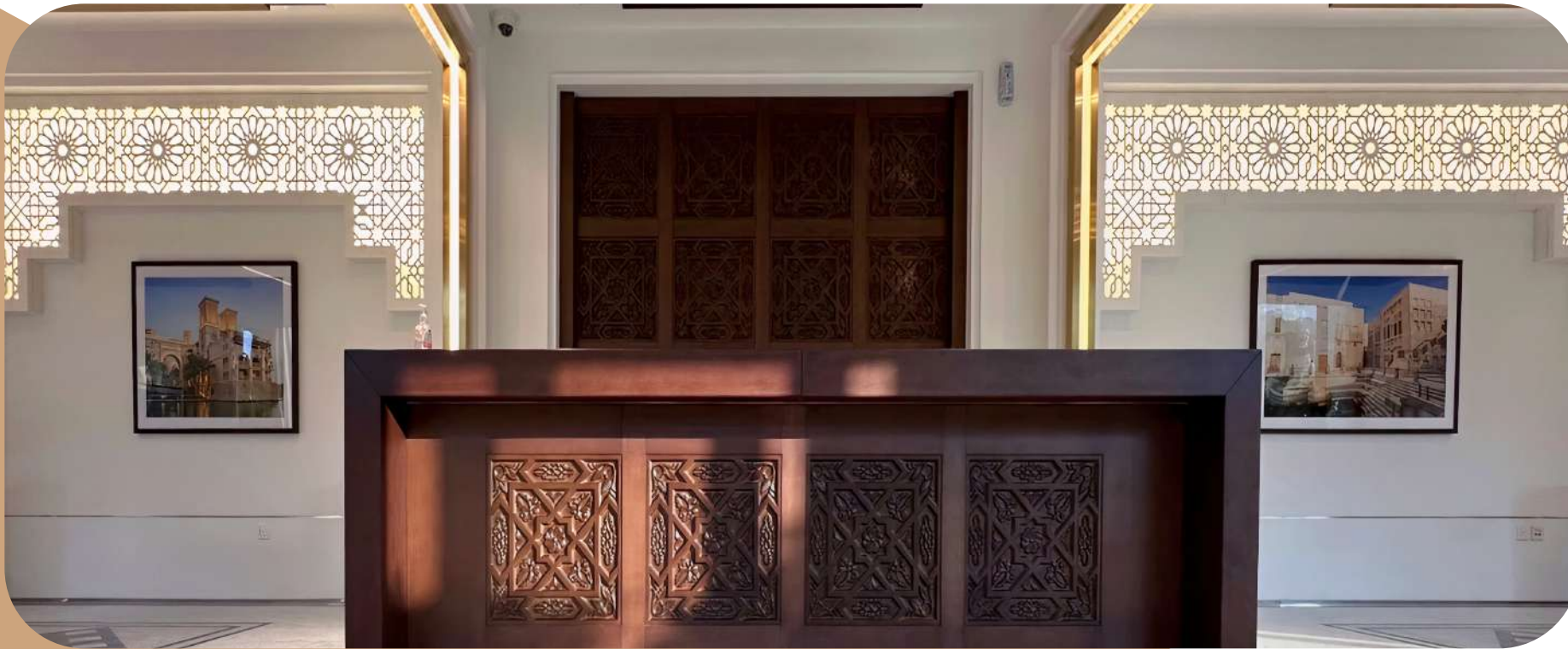
Arabic architecture

9-storey projects are made in classical Arabic architecture. The sandy beige stone façade is complemented by dark brown window frames and trellis balcony railings.









Lobby entrance

Getting into the lobby, residents are greeted by an Arabic interior. White walls and beige furniture are complemented by a designer wooden reception desk.



Lamtara project

MJ
madinat
jumeirah
living

+971 (4) 364-0560



Lobby entrance



1-4 bedroom apartments

The project offers a choice of cozy 1-bedroom apartments or spacious residences with 2-4 bedrooms, each with a private balcony or terrace.





Beige trim

The interiors are made in white and beige tones using natural materials. White marble kitchen countertops add sophistication, while dark brown window frames contrast softly with neutral walls and beige tiled floors.





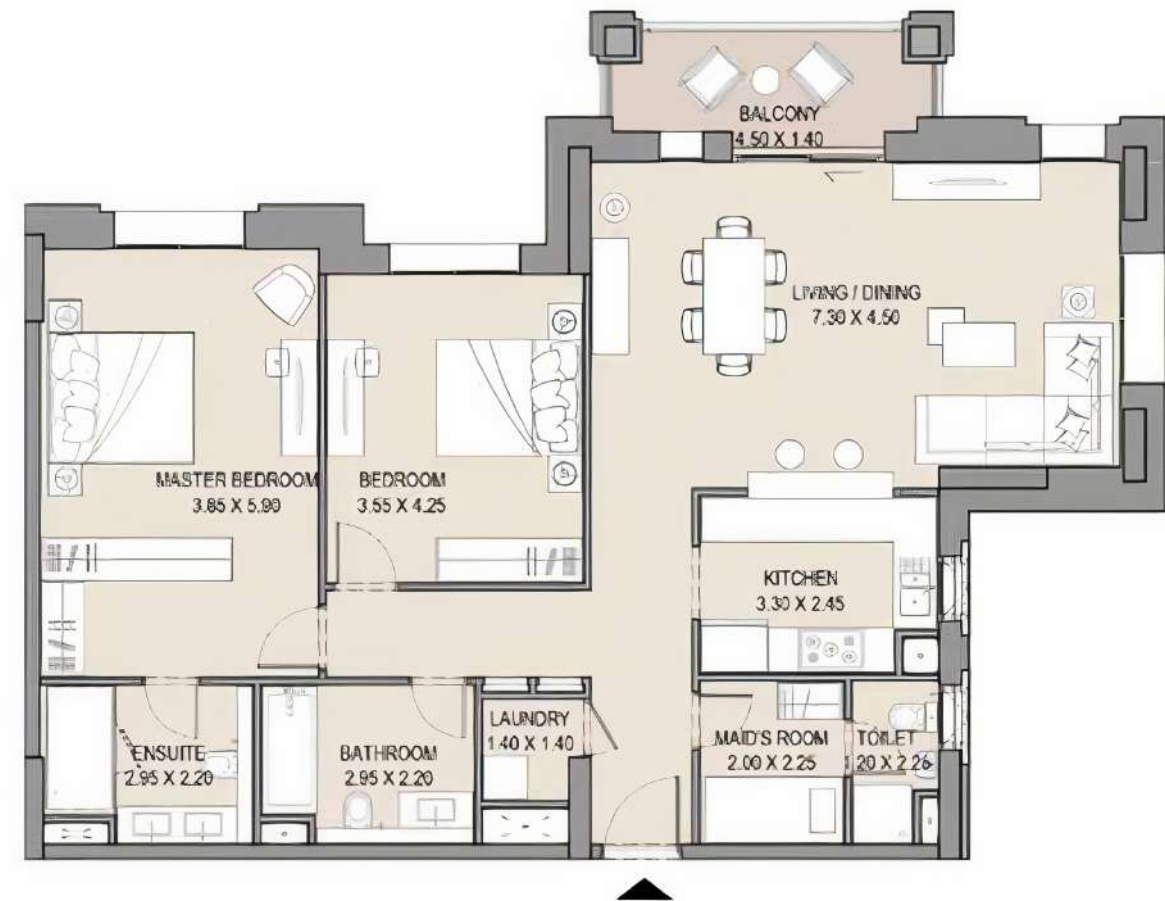
Layouts of the apartments with 1 bedroom



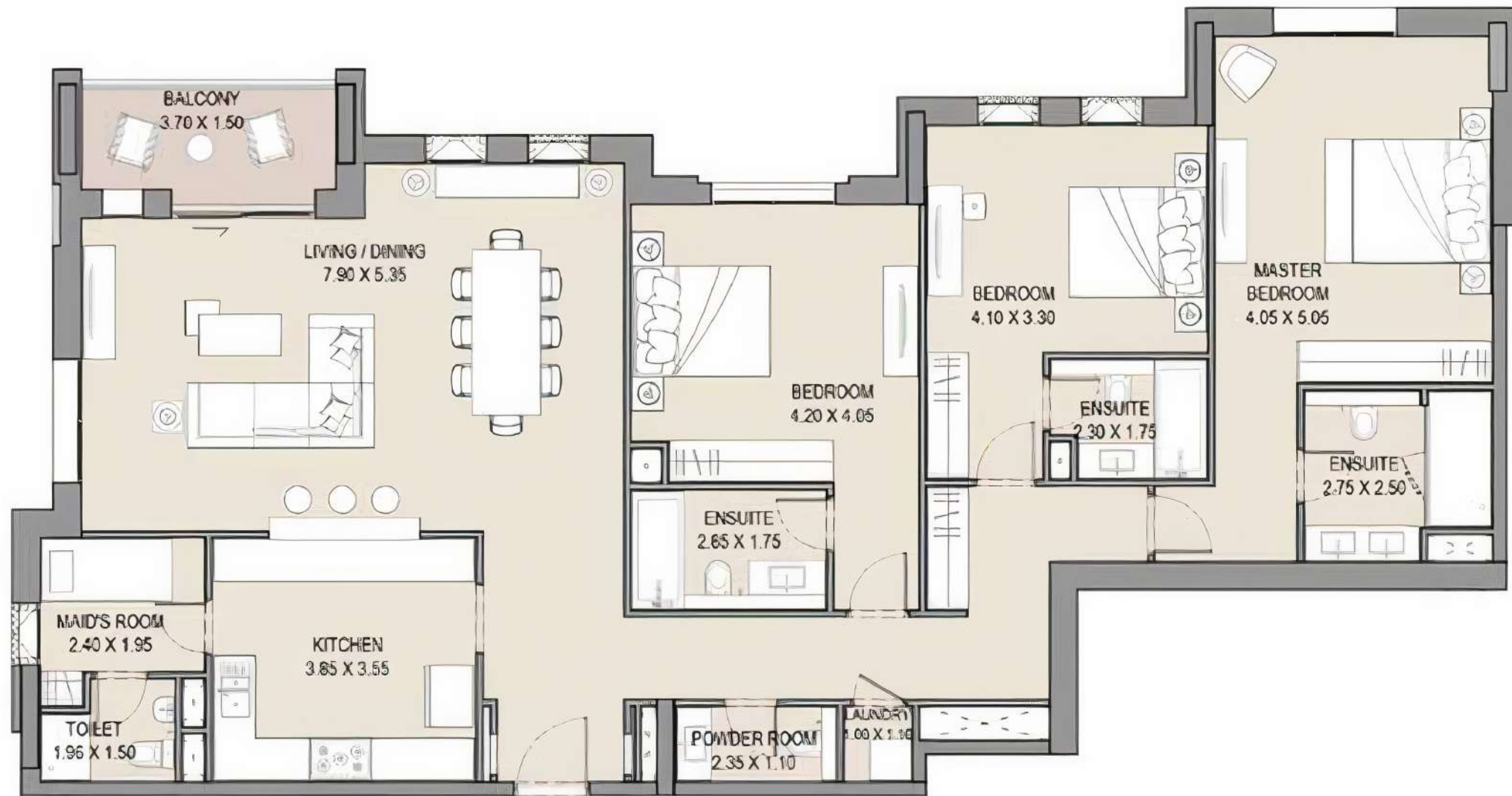
Layouts of apartments with 2 bedrooms



Layouts of apartments with 2 bedrooms



Layouts of apartments with 3 bedrooms



Layouts of apartments with 4 bedrooms



Attraction views

Enjoy panoramic views of the iconic Burj Al Arab skyscraper, the sea skyline and the area's green spaces.



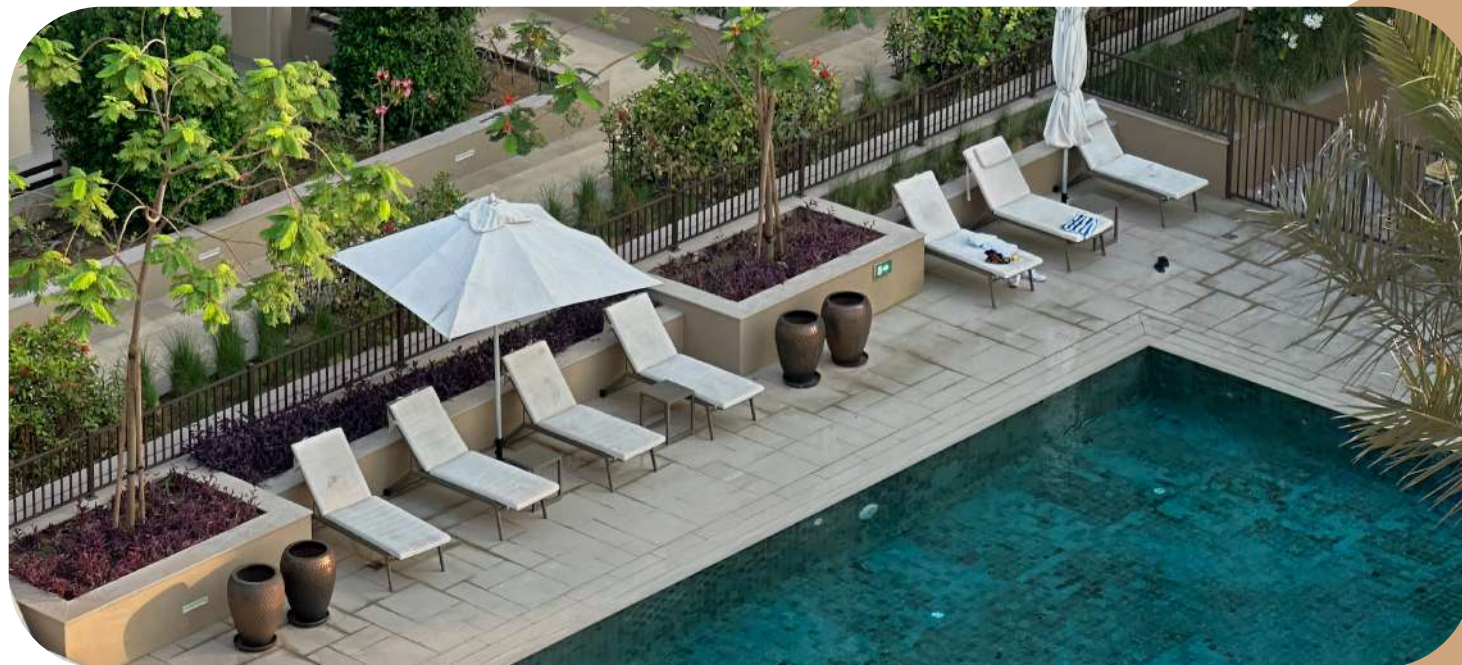
Spacious balcony

Step out onto the spacious balcony and relax in the furnished seating area. Enjoy magical sunsets while reading a book on a soft sofa in the fresh air.



Outdoor swimming pool

On the territory, immersed in greenery, amenities for recreation were arranged. The azure pools will delight you with a comfortable stay even on a hot day. Relax your muscles after a hard day by taking a dip in the pool or relaxing on a sun lounger with a refreshing cocktail.







Modern gym

Train in a fully equipped gym suitable for any type of workout. Run on the treadmills with panoramic views of the greenery and the MJL grounds.



Terraces with barbecue

Spacious rooftop and ground floor terraces feature BBQ areas where you can dine al fresco and take in breathtaking views of Madinat Jumeirah, the Burj Al Arab and the calm sea.



Courtyard

A central walkway winds its way through the community, providing access to private entrances to the grounds and courtyard where children can play in the playground while you relax on the terrace.





Aswaaq Mall

A couple of minutes walk from MJL there is a large shopping center where you can both have fun shopping and have a bite to eat in one of the many cafes.

Wild Wadi Park

One has only to cross the road on the pedestrian bridge, as residents of Madinat Jumeirah Living will find themselves in one of the most popular water parks in the UAE, Wild Wadi Park. The theme of the park is made in the spirit of the Arabian fairy tales about Sinbad the Sailor. One of the most exciting attractions is Jumeirah Sceirah.



Variety of schools

There are many schools around the project such as Kings' Dubai School, Raffles World Academy, Horizon International School, Hind Bint Maktoum School, Al Sharawi School, Emirates International School, Collegiate International School. All of them are located about 5-10 minutes away by car.



+971 (4) 364-0560



Project handed over

+971 (4) 364-0560



Book a viewing by phone:
+971 (4) 364-0560





Whitewill Real Estate Experts

We sell deluxe, premium and business class property in more than
140 residential developments in Dubai

+971 (4) 364-0560

